

SURGICAL MANAGEMENT OF IRIS DEFECTS

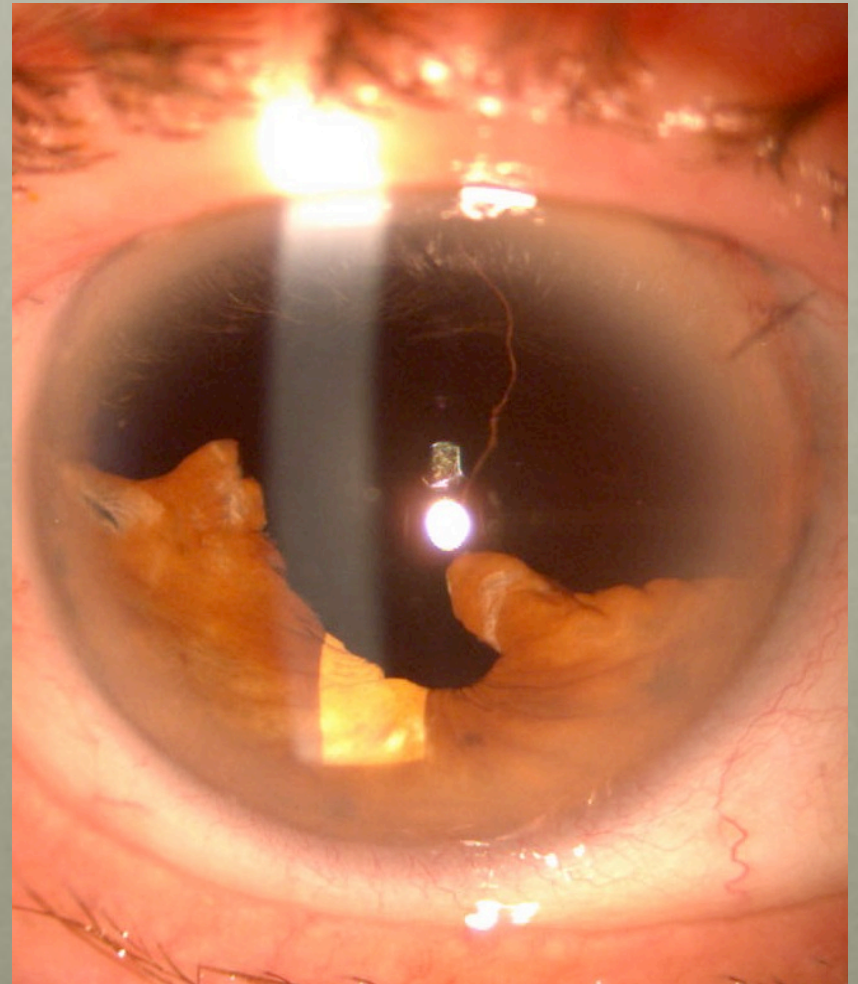
Samuel Masket MD
Clinical Professor - UCLA
Los Angeles

DISCLOSURES

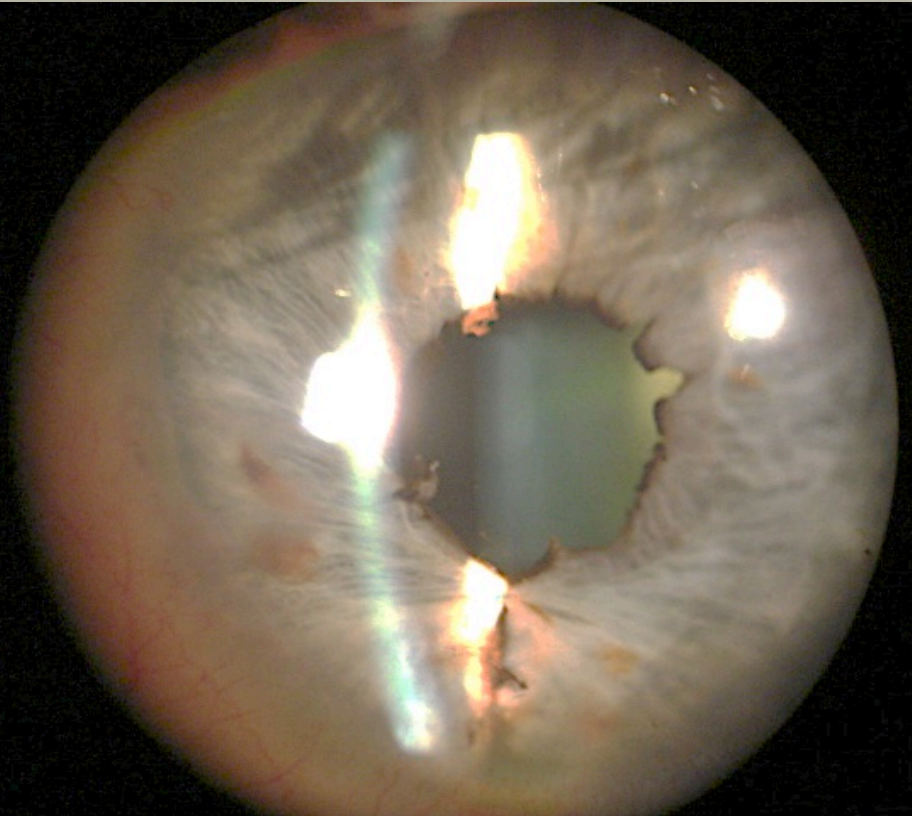
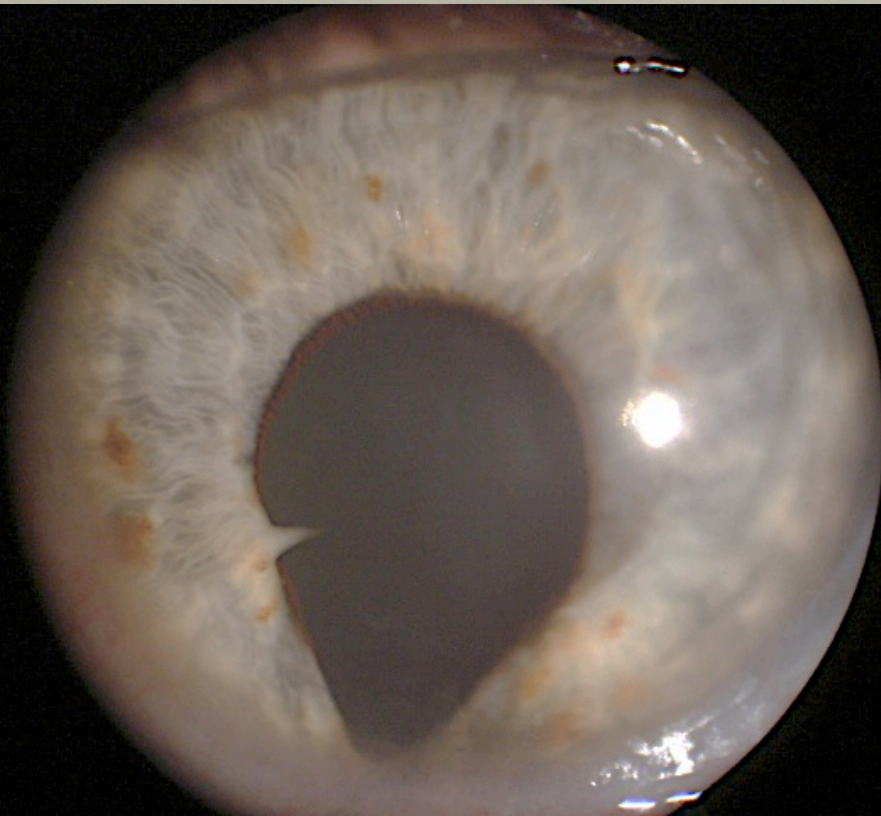
- **Accutome – Grant Support**
- **Alcon – Consultant, Lecture Fees**
- **Haag-Streit – Consultant, Royalties**
- **MST – Lecture Fees**
- **Ocular Therapeutix – Consultant, Shareholder**
- **PowerVision – Consultant**
- **WaveTec Vision Systems – Consultant, Lecture Fees, Research grant**
- **US Patent for Anti-Dysphotopic IOL**

“IRIS WOES”

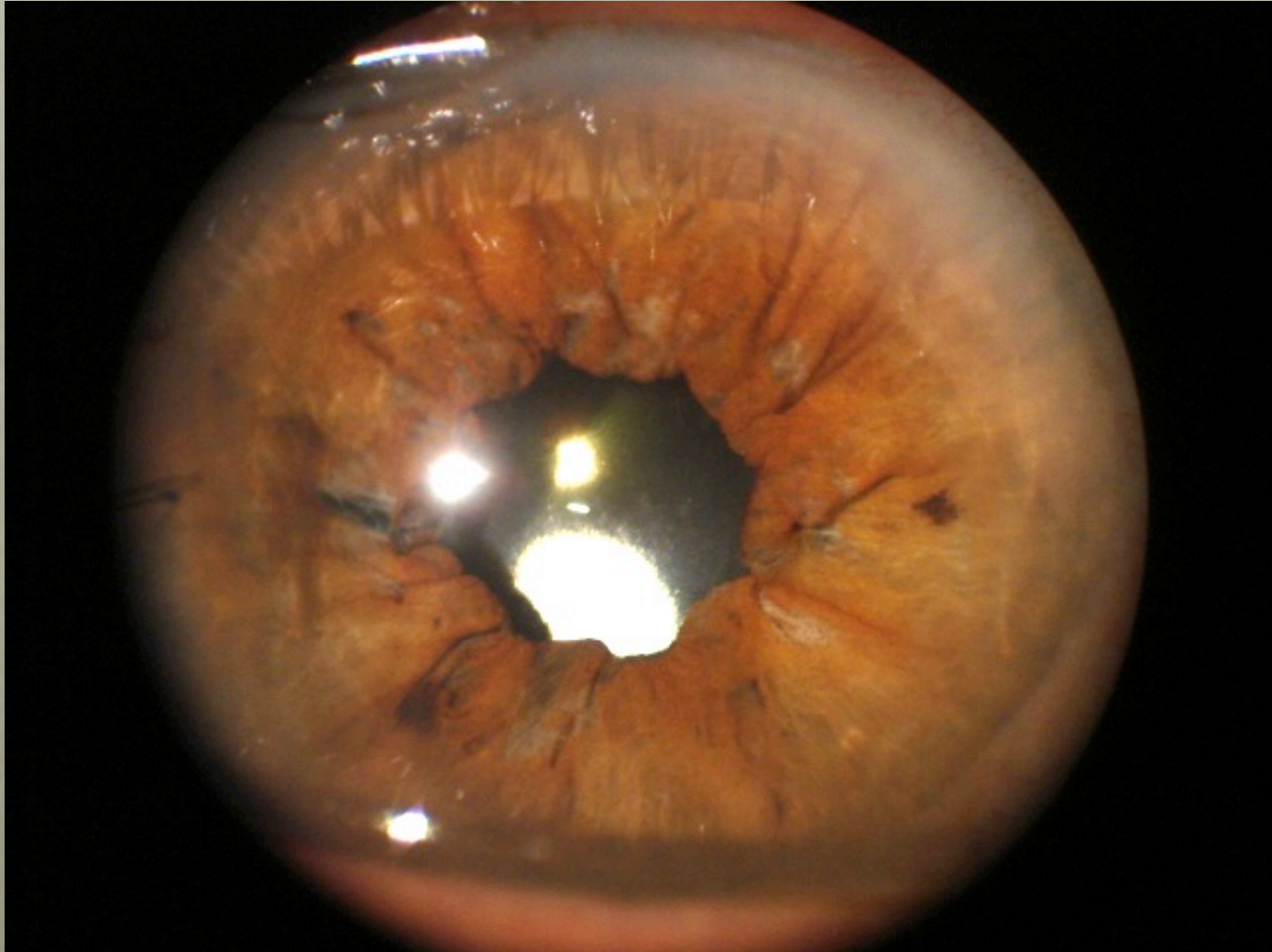
Loss of Iris Tissue or function can have devastating effects on quality of vision, glare, cosmesis, and general quality of life



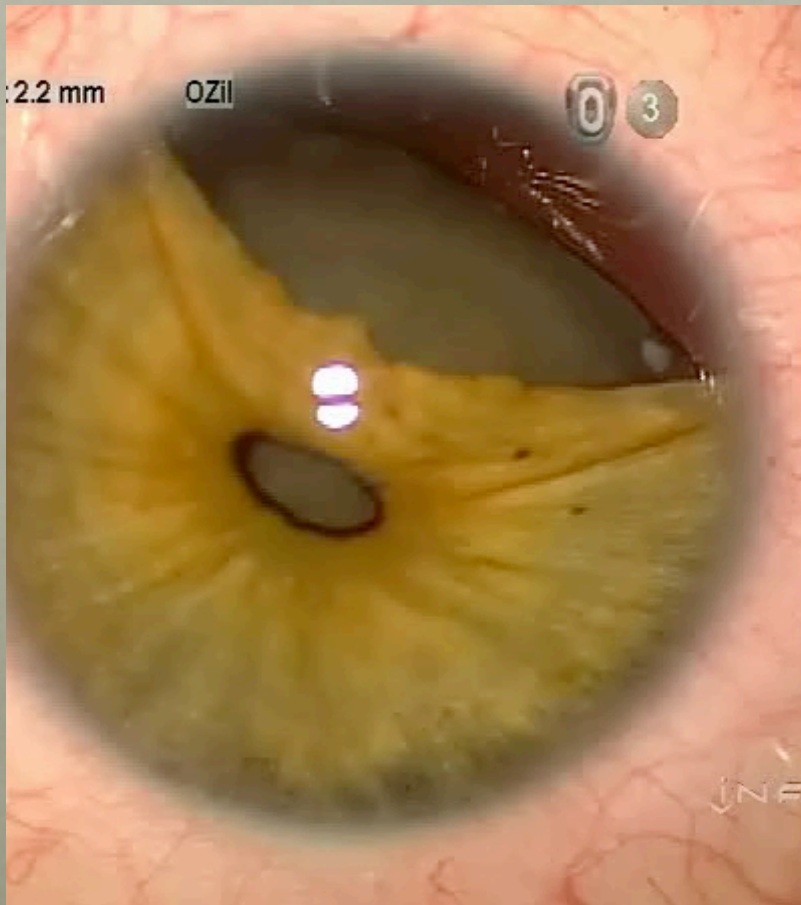
IRIS SUTURING



IRIS SUTURING



IRIS SUTURING



Dr. Masket 2.2 mm

OZil

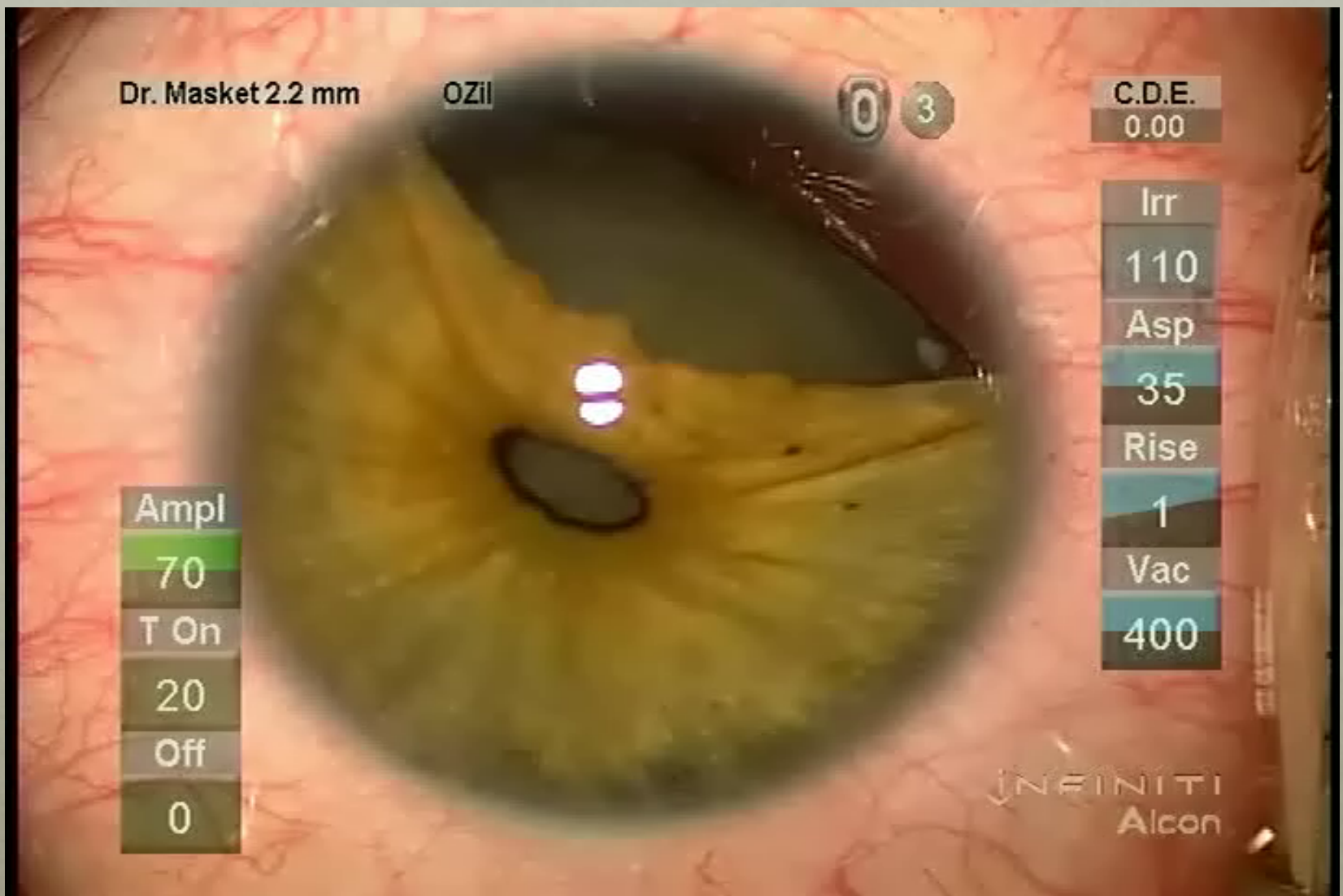
0 3

C.D.E.
0.00

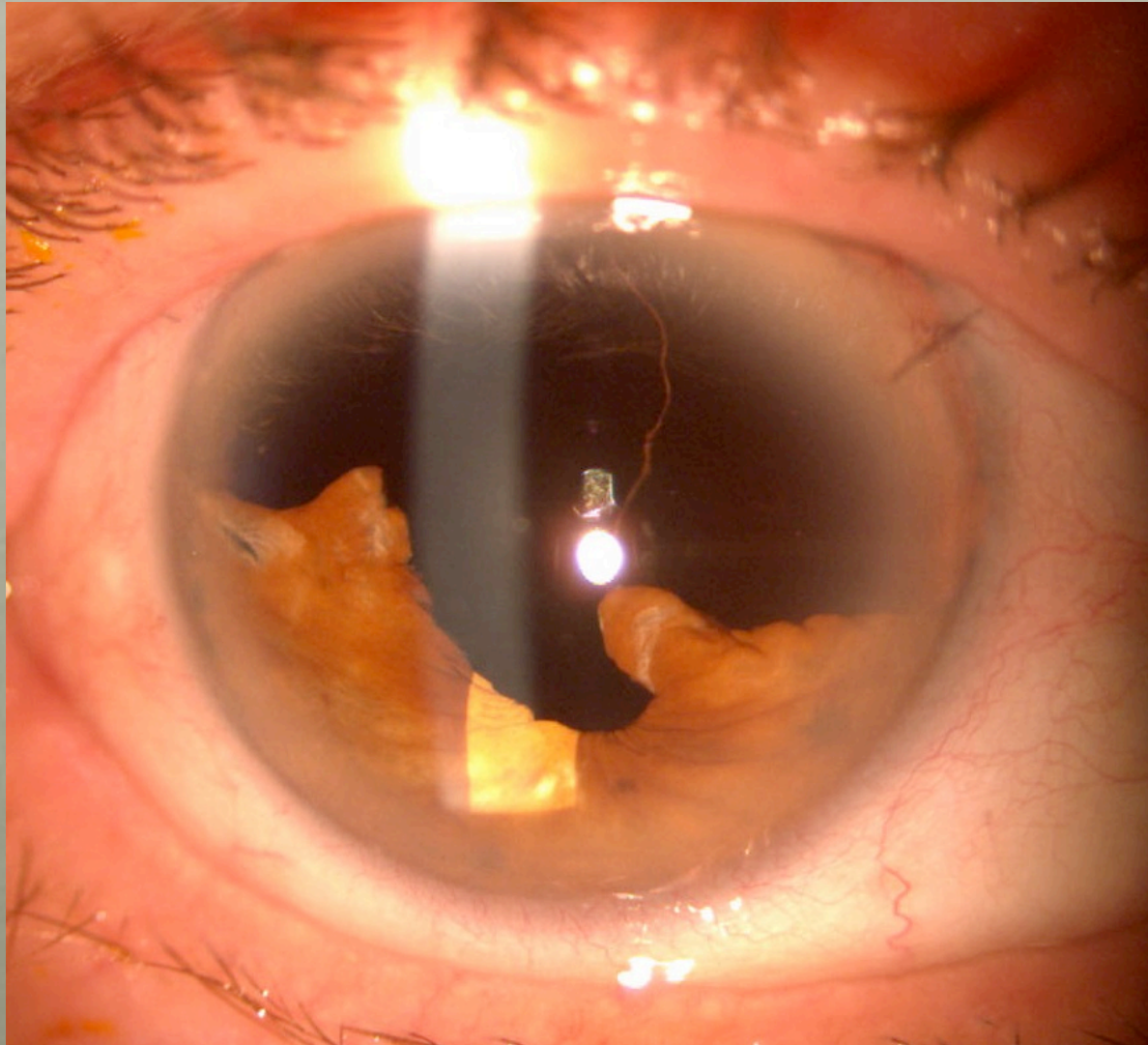
Ampl
70
T On
20
Off
0

Irr
110
Asp
35
Rise
1
Vac
400

INFINITI
Alcon



TRAUAMTIC CATARACT SURGERY

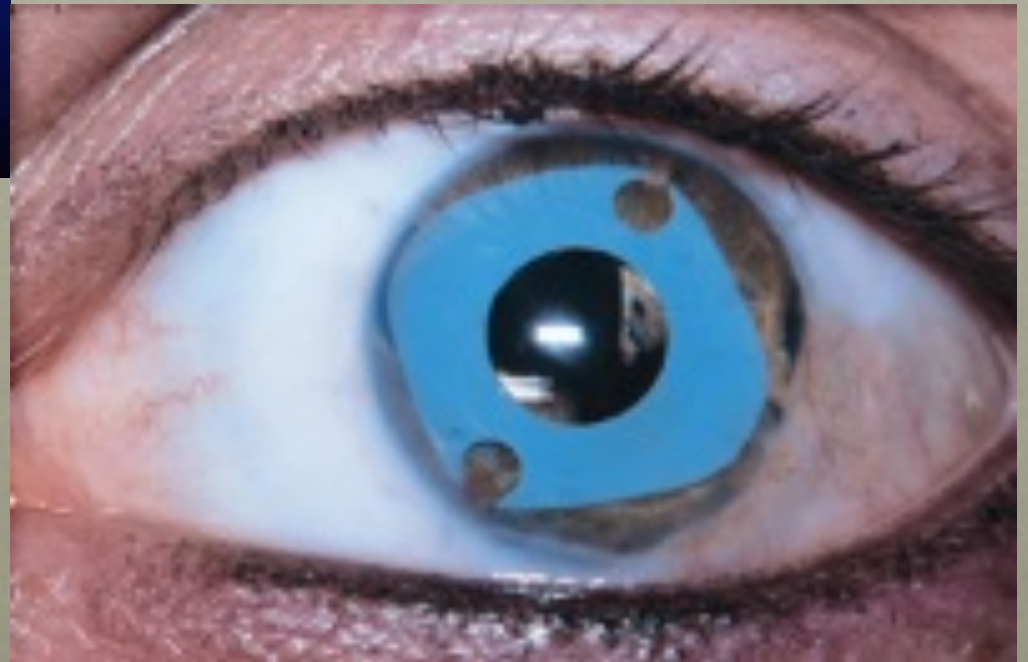


**No Artificial Iris Devices are
US FDA Approved**

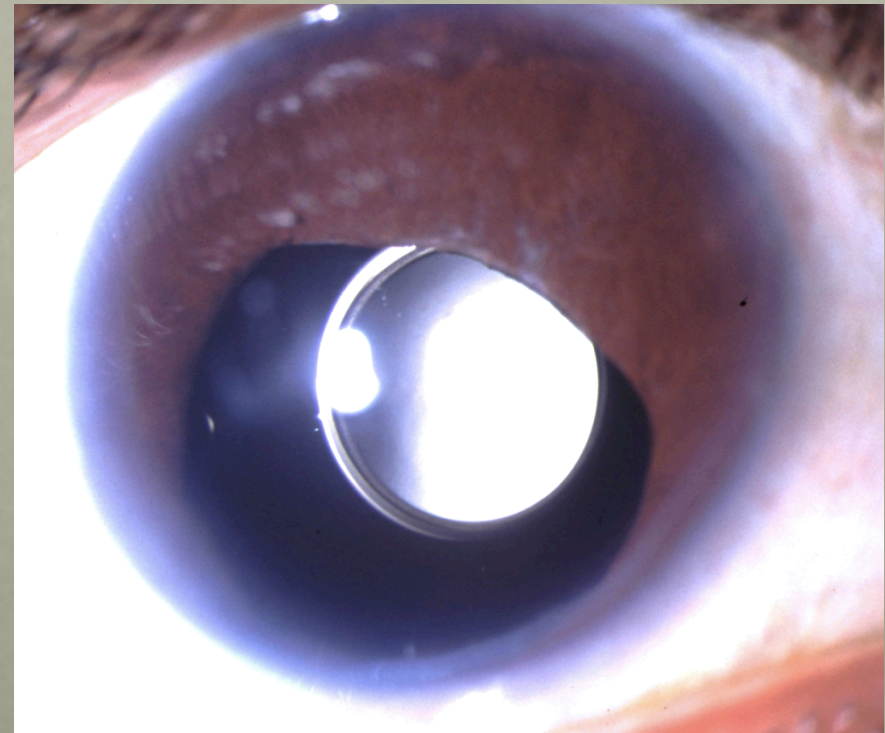
**Humanoptics Custom Iris is
Limited to Investigational Use
Only**

**No Other Devices are Available
in the US**

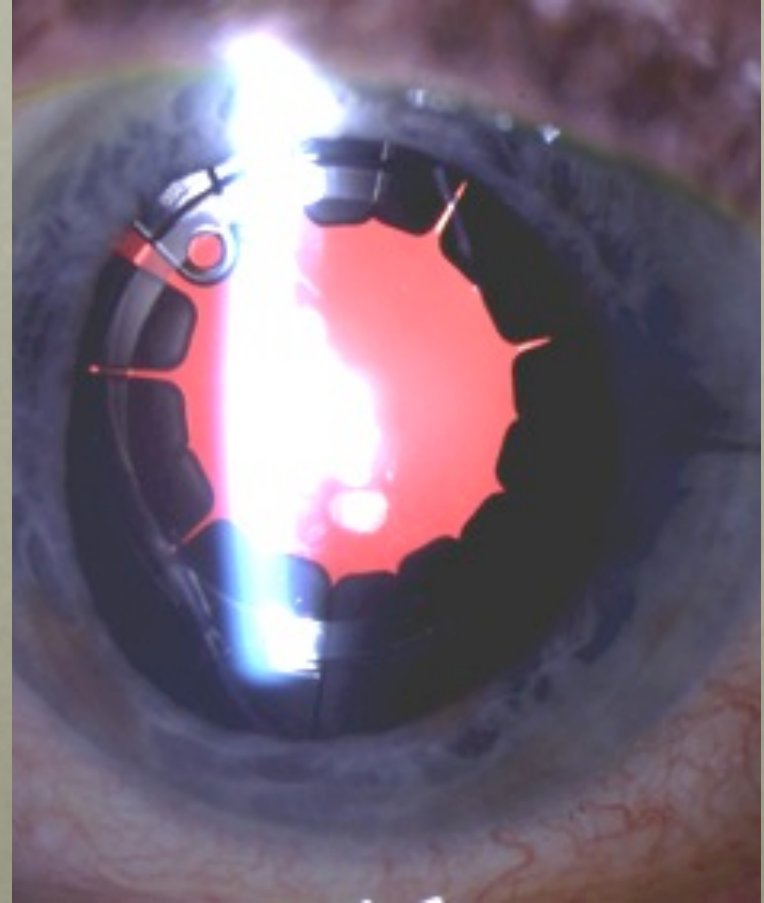
OPHTEC ANIRIDIA DEVICES



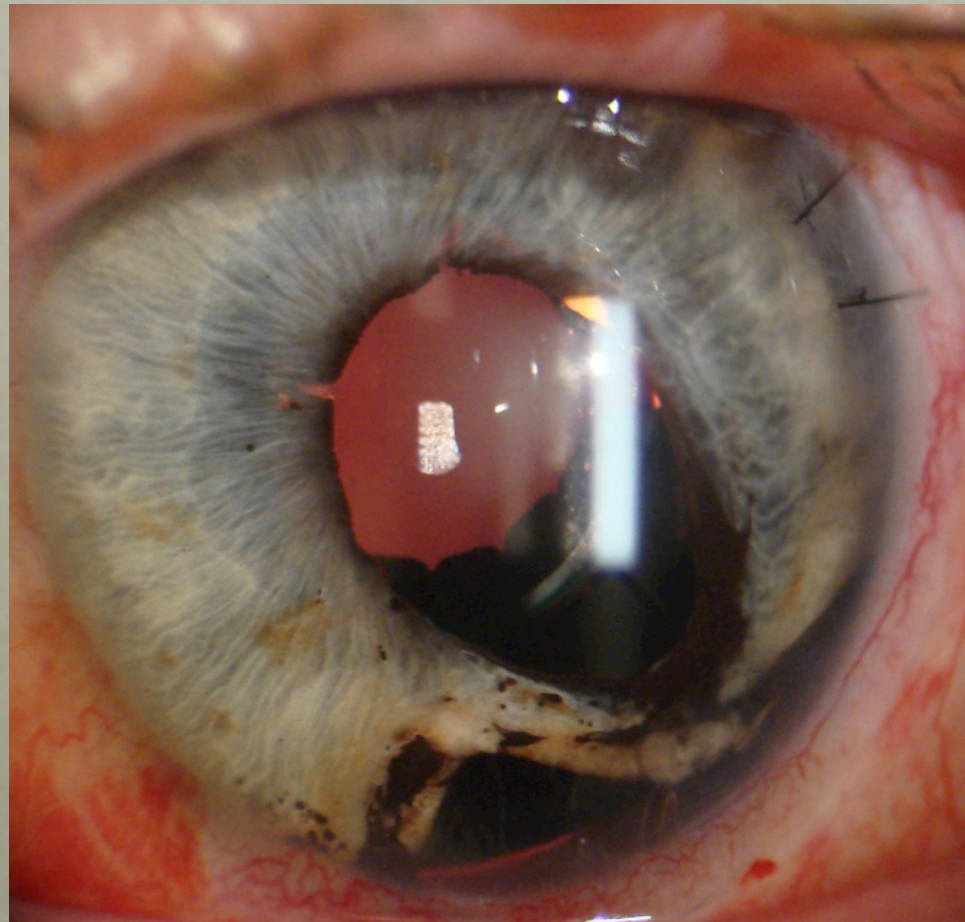
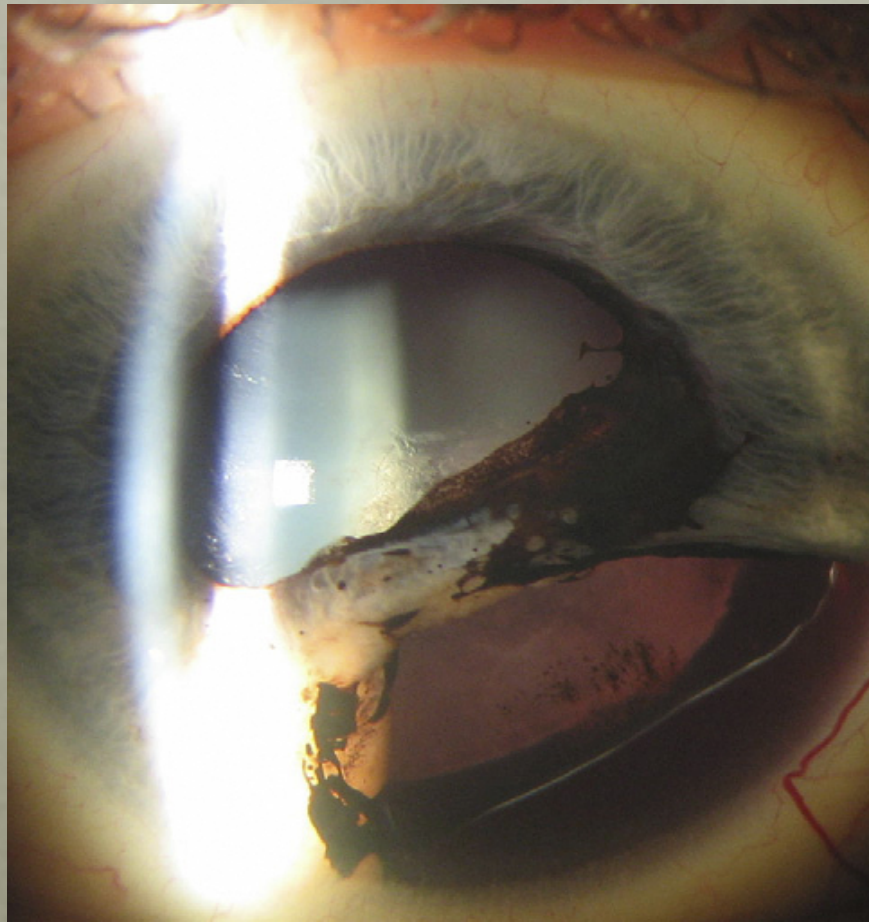
MORCHER – IRIS DIAPHRAGM IOL



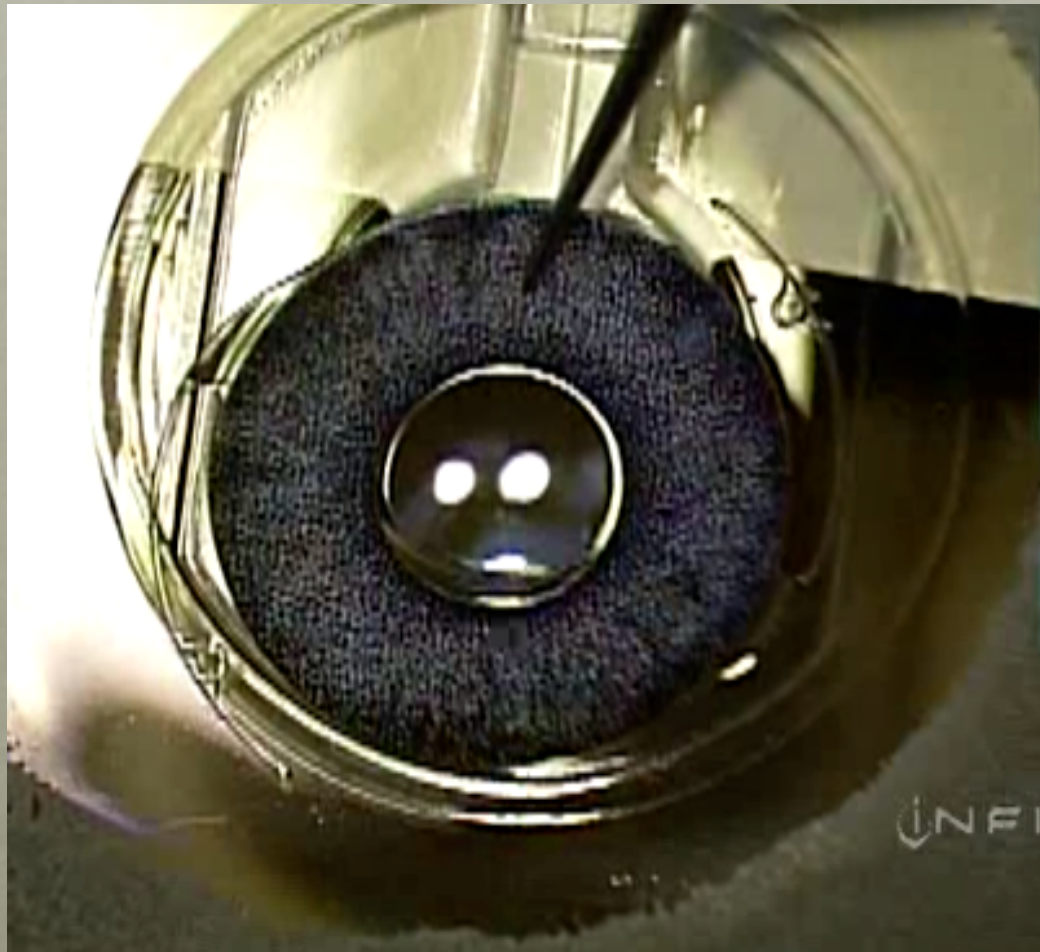
MORCHER CTR/ANIRIDIC RING DEVICES



BLUNT TRAUMA



MORCHER IRIS COLOR MATCH ANIRIDIC IOL



TENNIS BALL INJURY

- Required emergency trab and anterior vitrectomy
- Developed mature cataract with 6 + clock hours of zonular loss and iridoplegia
- Currently uses 3 meds for IOP control



Dr. Masket 2.2 mm

Coag

0 40

C.D.E.

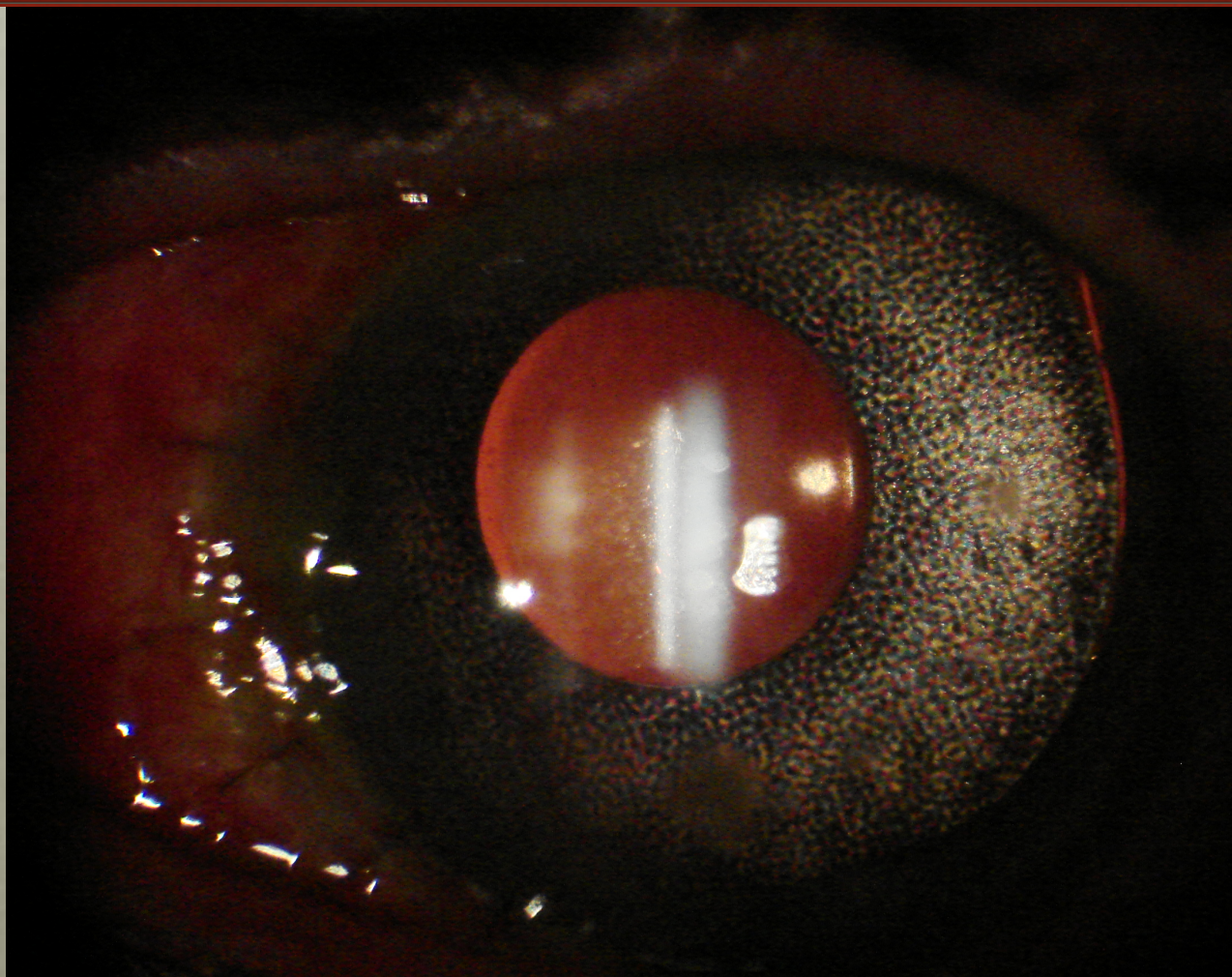
0.00

Irr

110

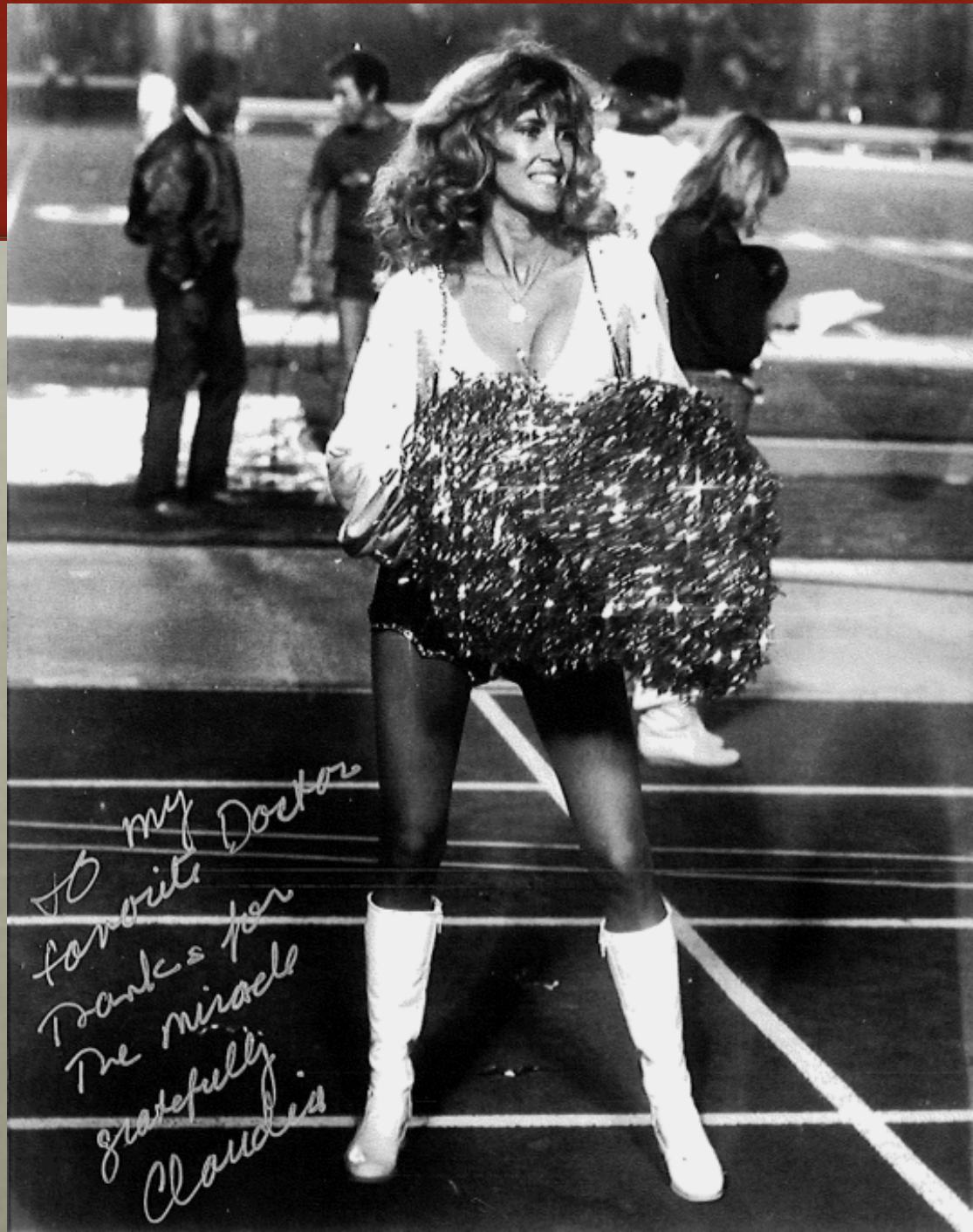
INFINITI
Alcon

OUTCOME



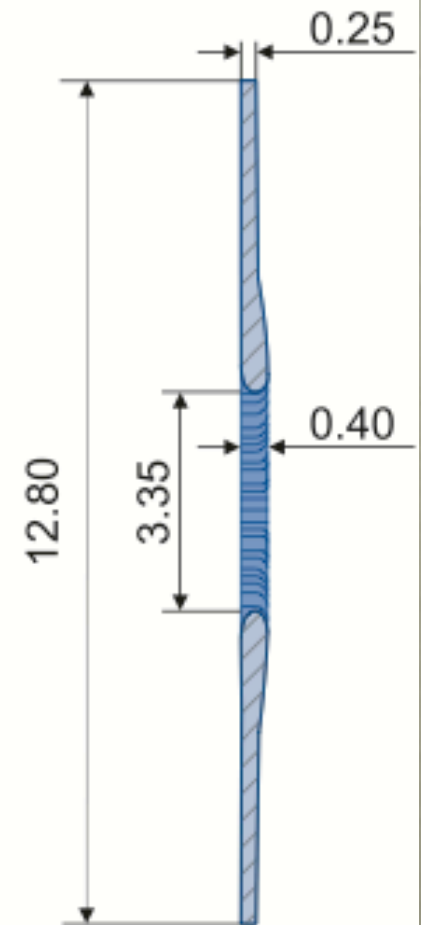
OUTCOME





To my favorite Doctor
Thanks for
The miracle
gratefully
Claudia

HUMANOPTICS SILICONE CUSTOM ARTIFICIAL IRIS – FDA-IDE



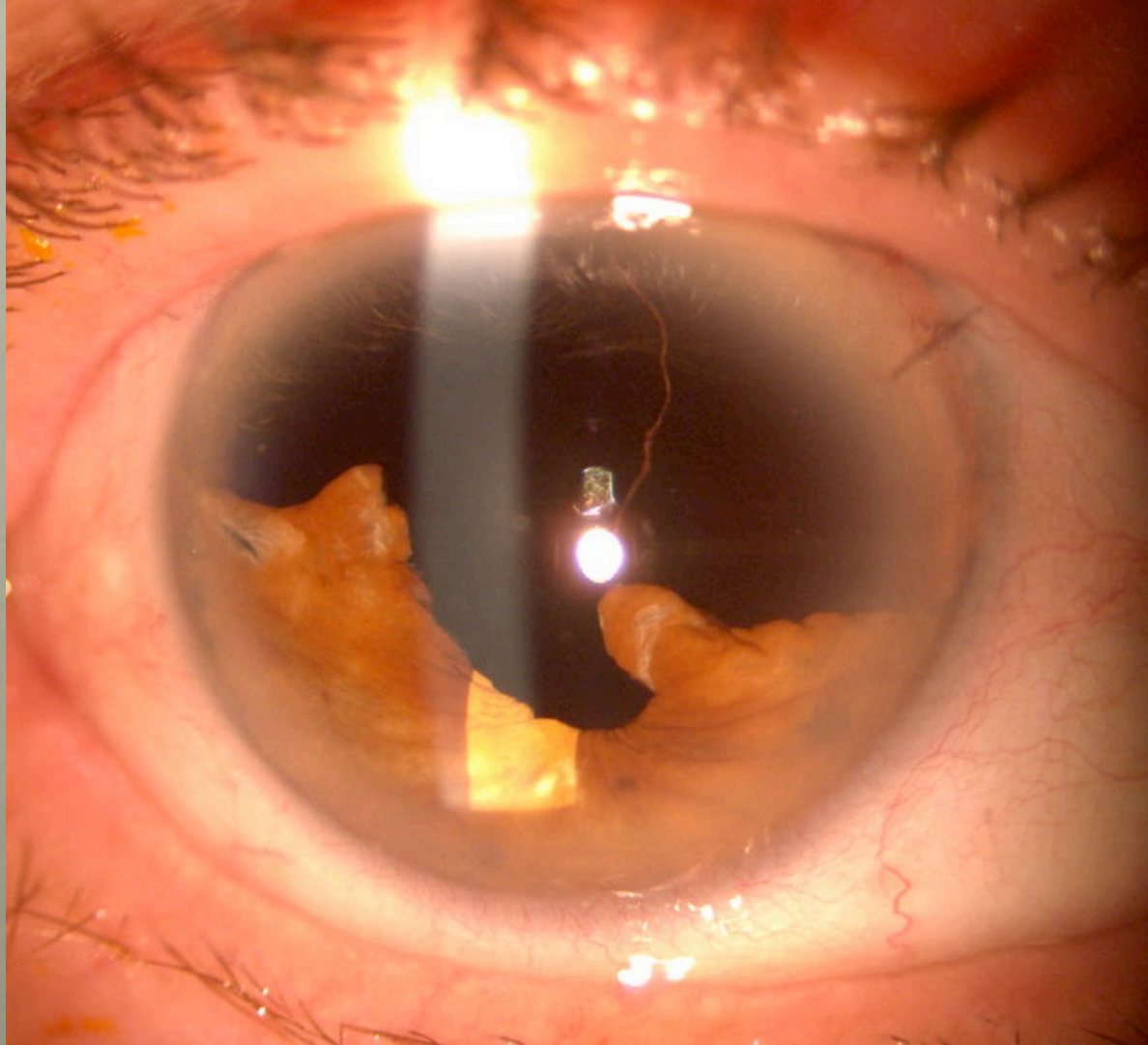
21 Y/O FEMALE – CONGENITAL
ANIRIDIA - HUMANOPTICS
ARTIFICIAL IRIS



SECOND EYE SURGERY - POST OP



TRAUAMTIC CATARACT SURGERY



Dr. Masket 2.2 mm

Coag

0 30

C.D.E.

0.00

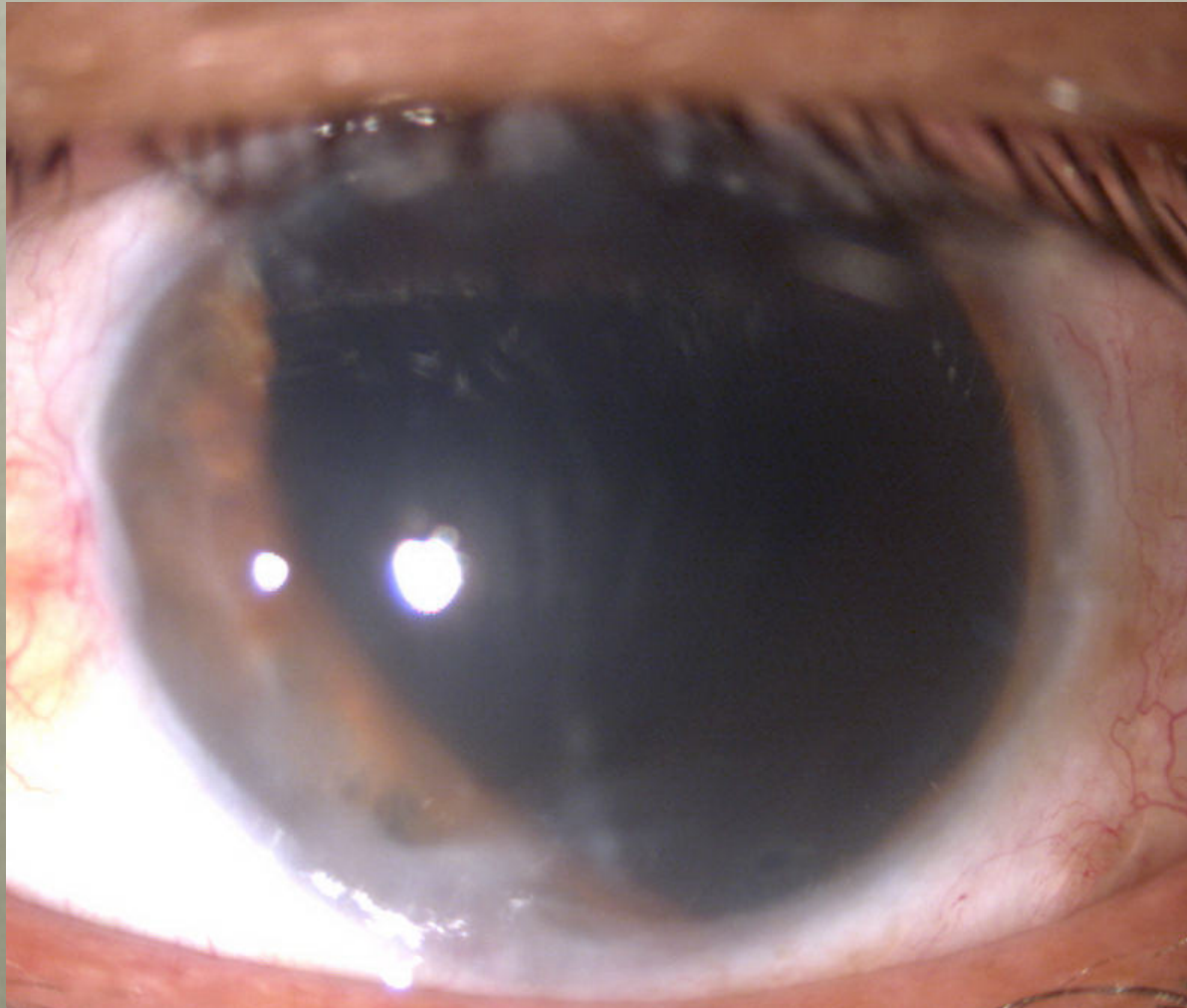
Irr

110

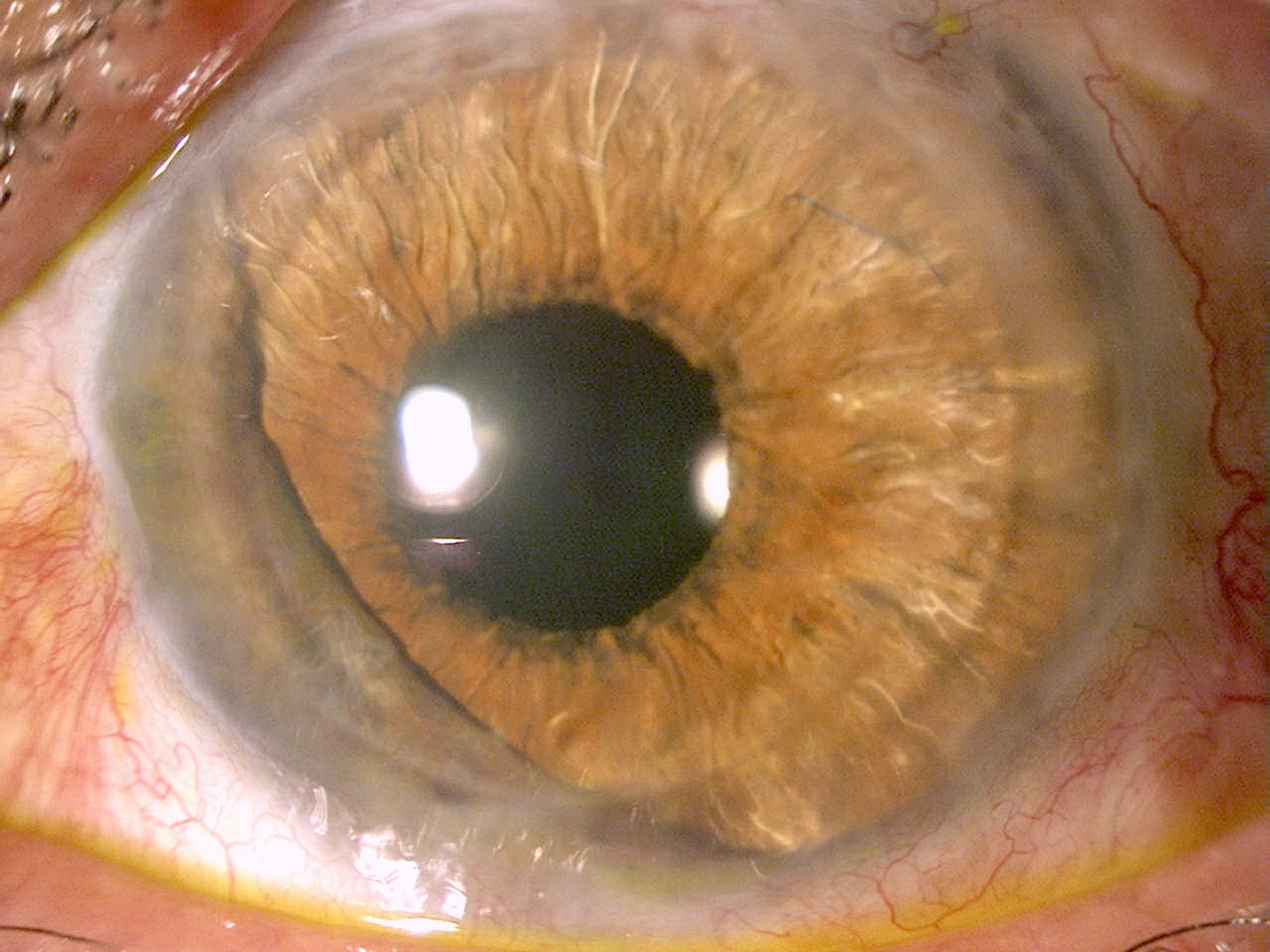
INFINITI
Alcon

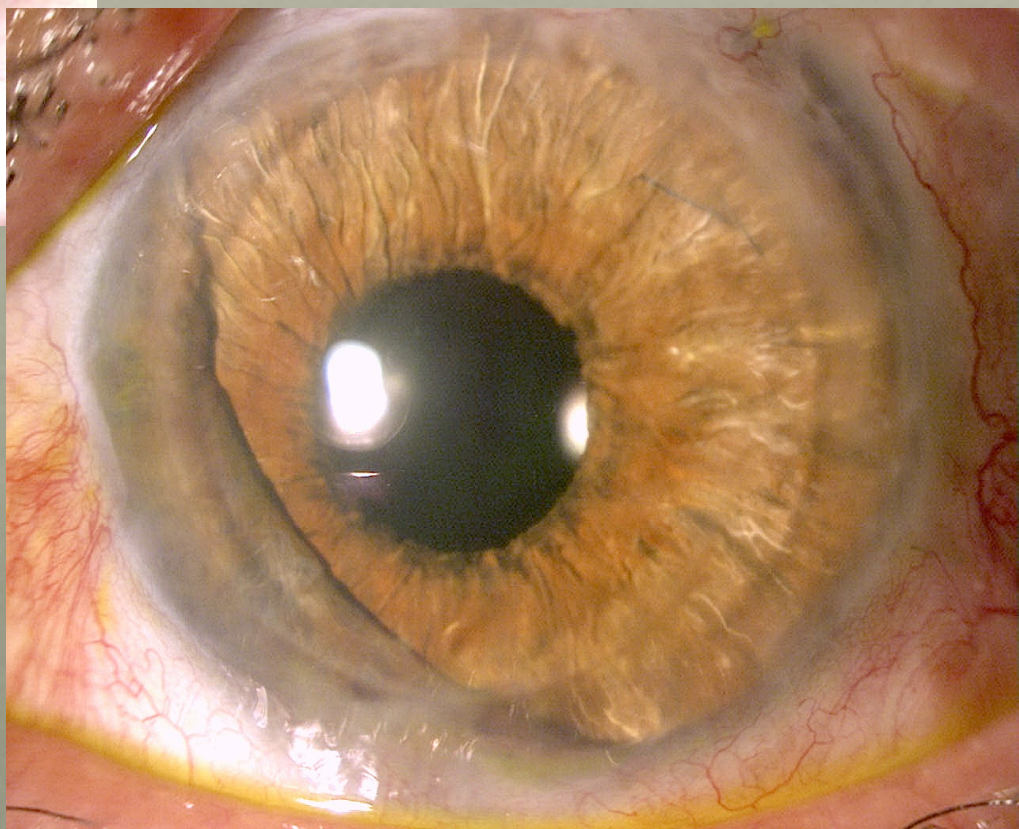
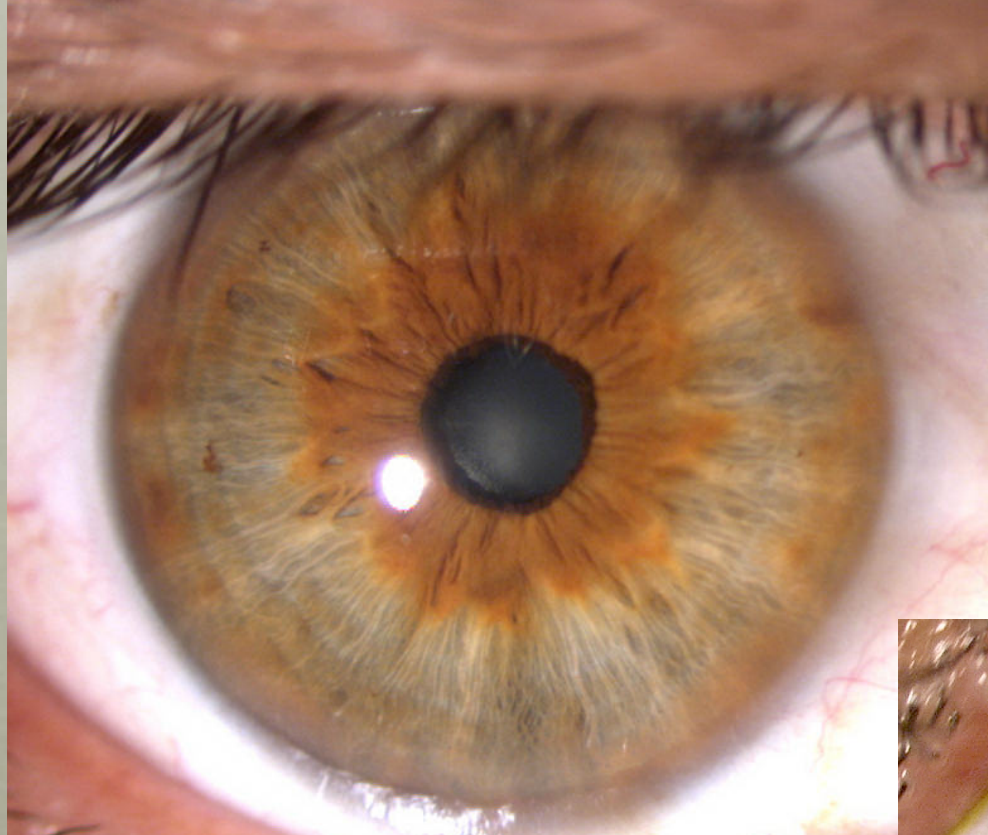


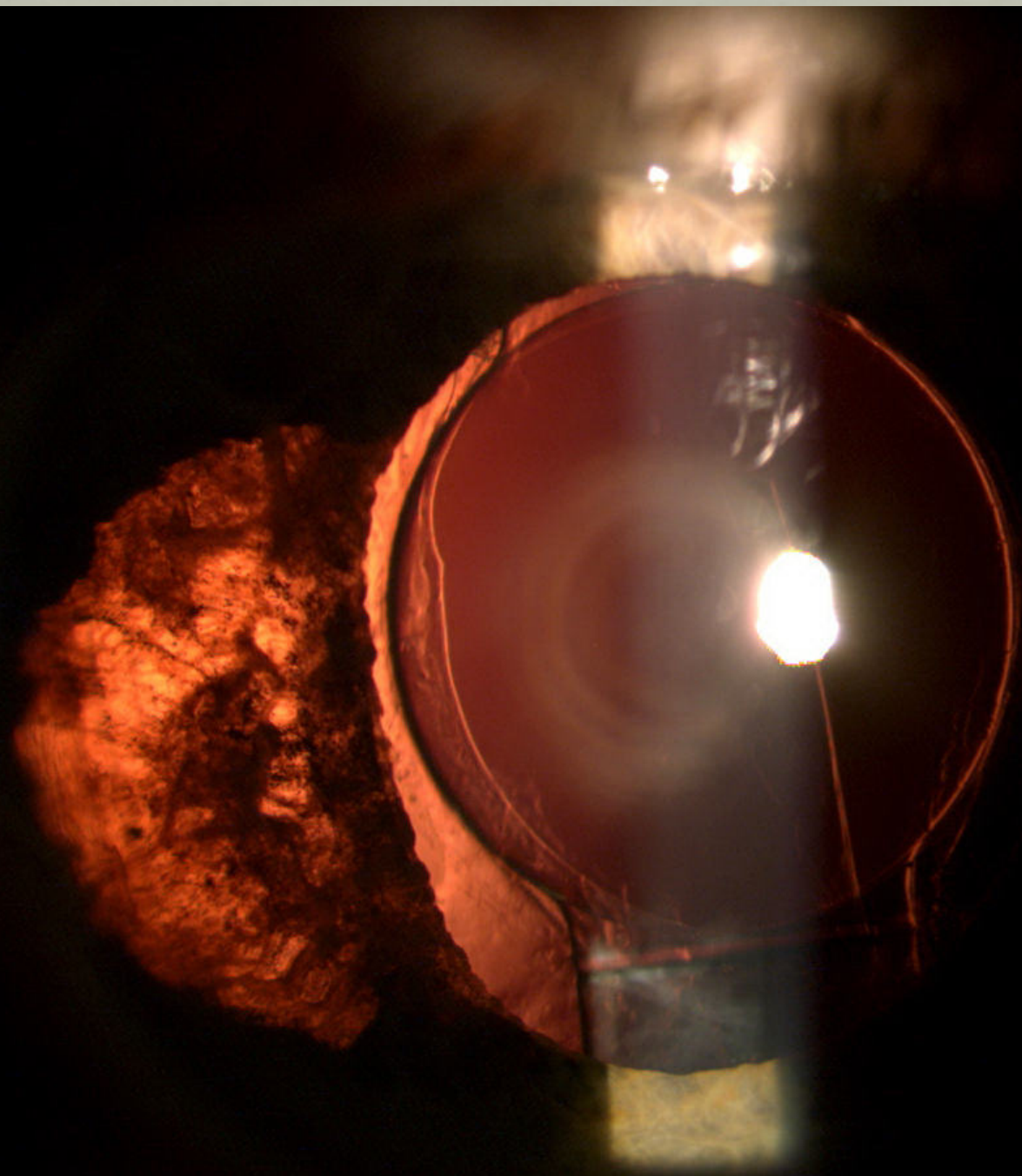
PERFORATING INJURY











Dr. Masket 2.2 mm



C.D.E.
0.00

Irr

110

Asp

45

Rise

0

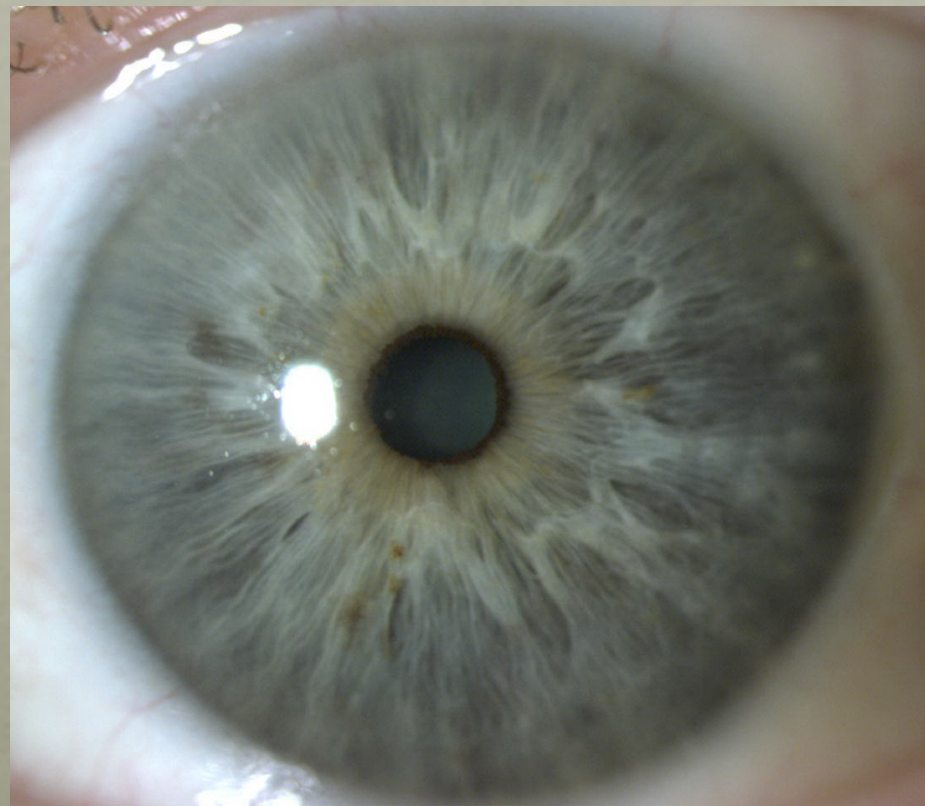
Vac

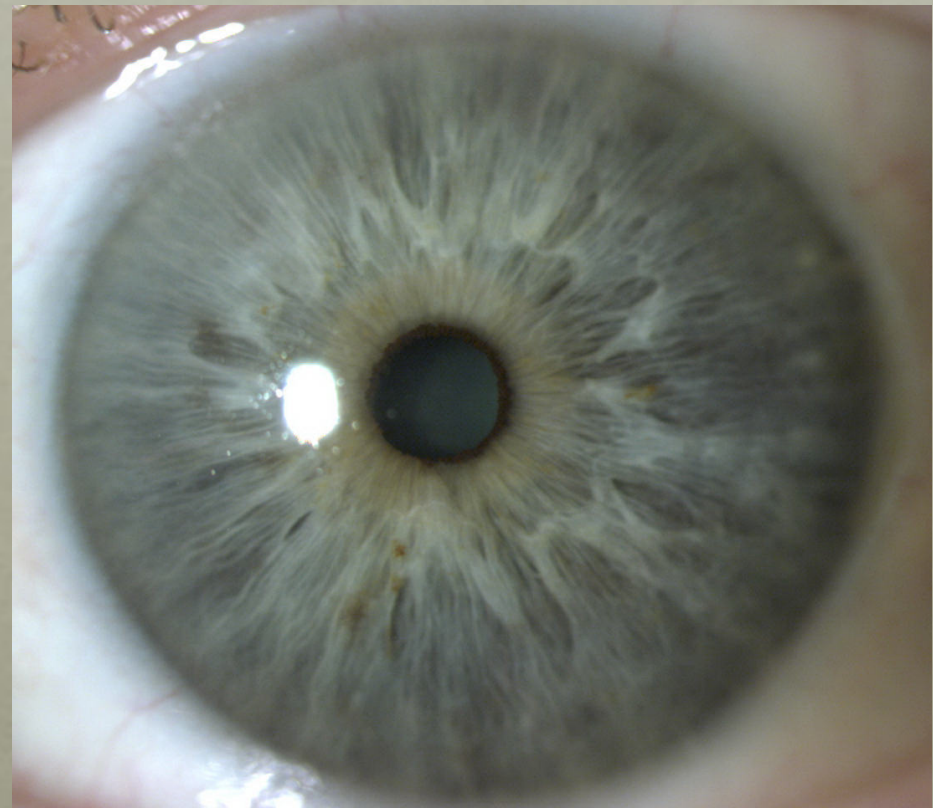
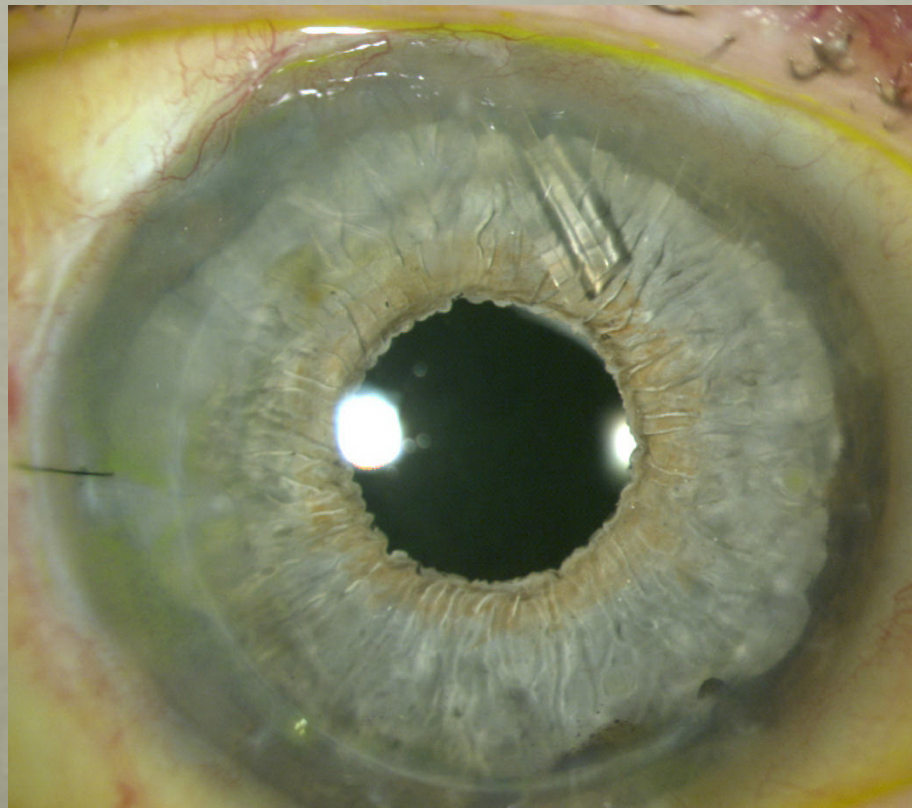
400

0

Alcon

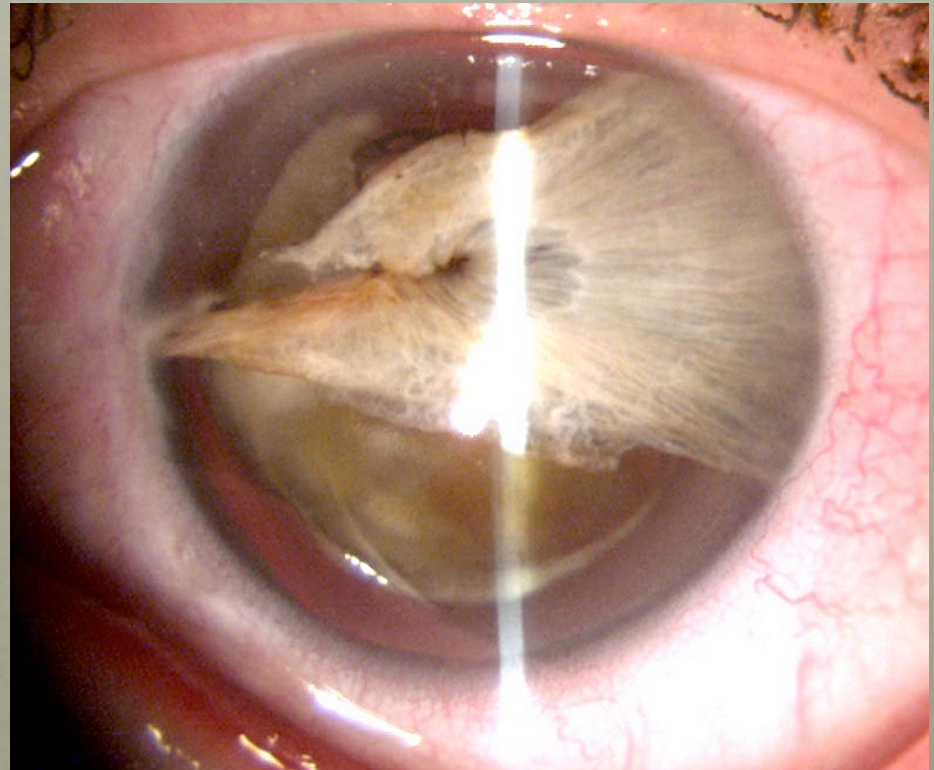
ICE – SP: KPE/PKP/SHUNT

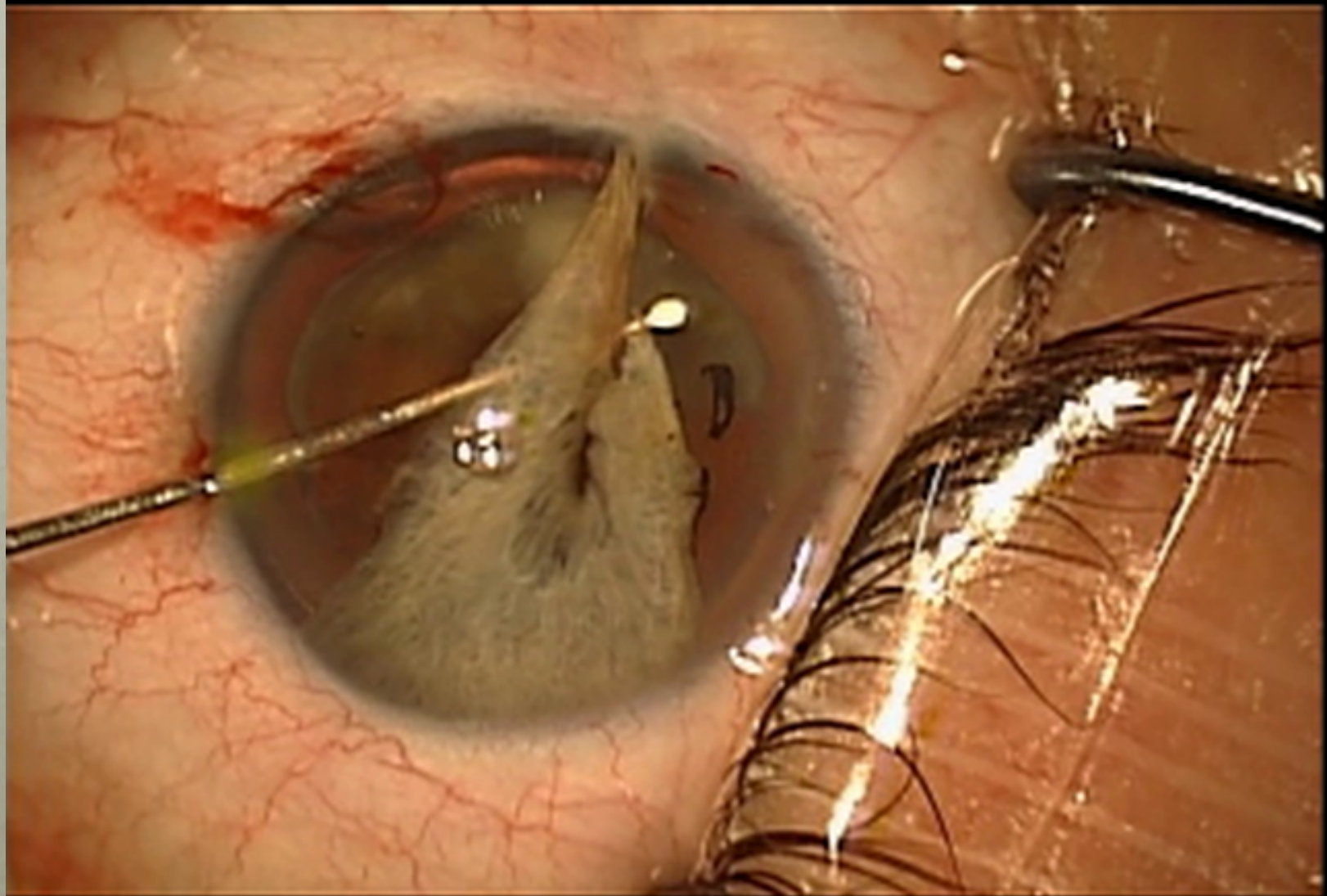




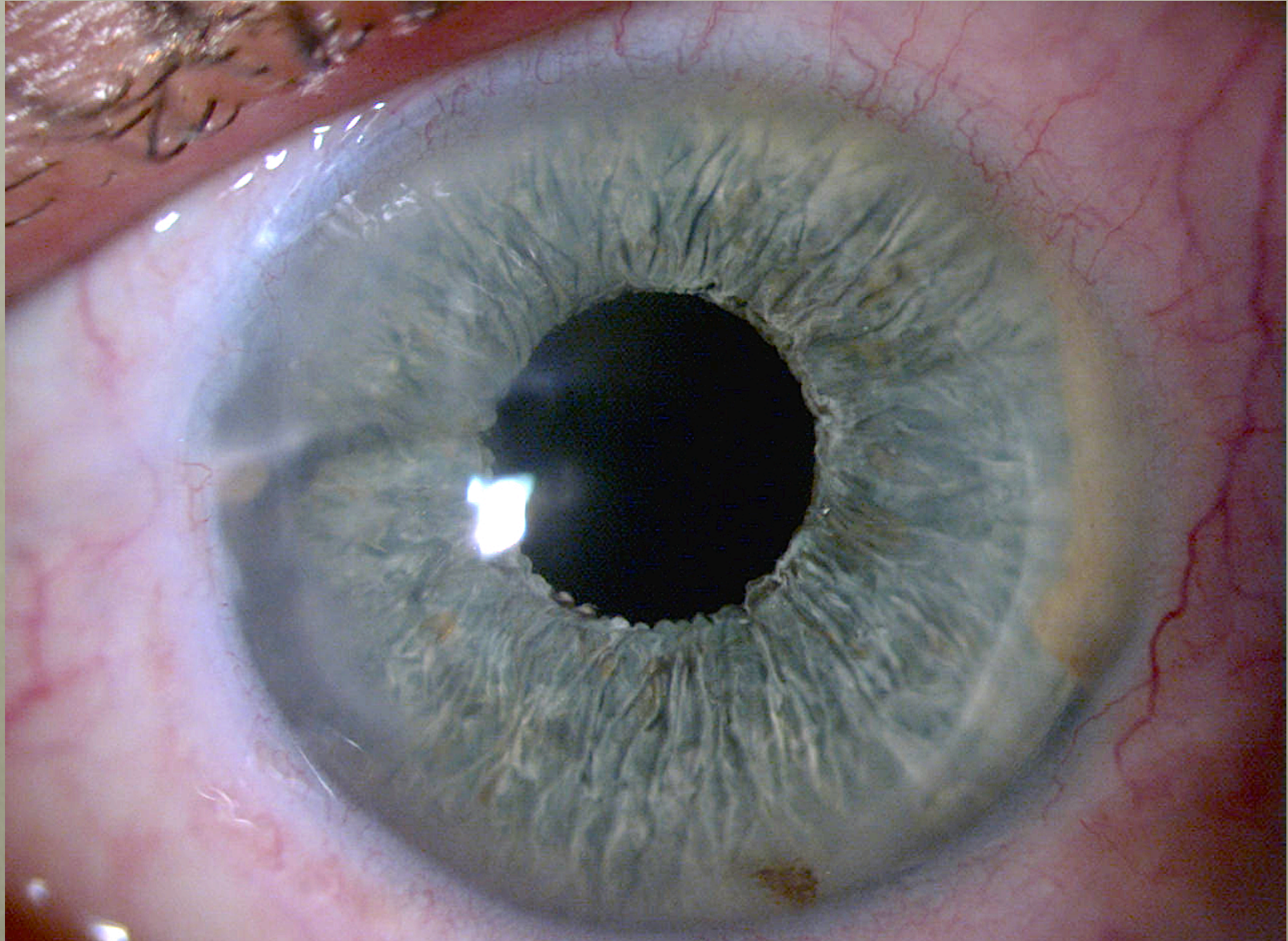
PERFORATING INJURY

- 49 y/o woman sustained perforating corneal injury to LE in 1980
- RE – normal all aspects
- LE – CF VA





OUTCOME LE

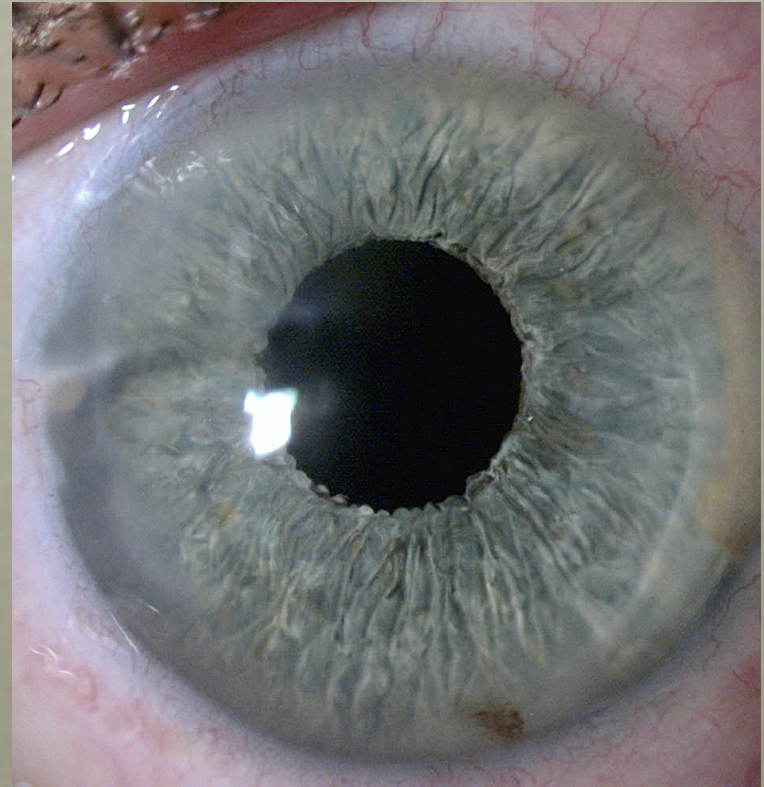


POST-OP

Uninvolved RE



Implanted LE



“IRIS WOES”

Loss of Iris Tissue or function can have devastating effects on quality of vision, glare, cosmesis, and general quality of life

